

# The Edge + The Wave Mixed Use Towers



Jensen  
PLANNING  
+ DESIGN



Jensen Planning + Design was engaged to prepare and manage the development process for an exciting project which forms part of the revitalisation of the southern end of King William Street. The site comprises two land parcels in an L shape fronting both King William Street and Gilles Street, Adelaide.

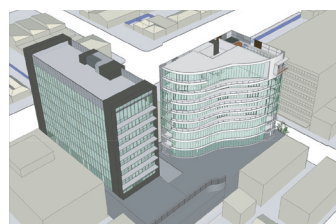
**Location:** King William Street  
+ Gilles Street  
Adelaide  
South Australia

**Client:** Adabco Properties

**Date:** 2008

**Architect:**  
JPE Design Studio

The development establishes two buildings linked together in a base podium of three storeys, with centralised towers on each site of 12 storeys. Each development comprises retail floor spaces on the ground floor, with parking on the two top levels of the podium (linked between the sites). The Edge has an office tower above while the Wave has a mixture of office floor space, together with exclusive penthouse apartments on the top three levels.



The site abuts lower scale residential development, containing State and Local Heritage Places, which presented a challenge to maximising the development potential for the sites. Jensen Planning + Design successfully negotiated a suitable design outcome with Council, Heritage SA and neighbouring landowners that achieved the objectives of all parties.

