



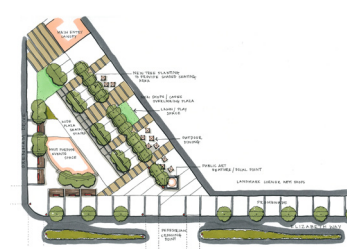
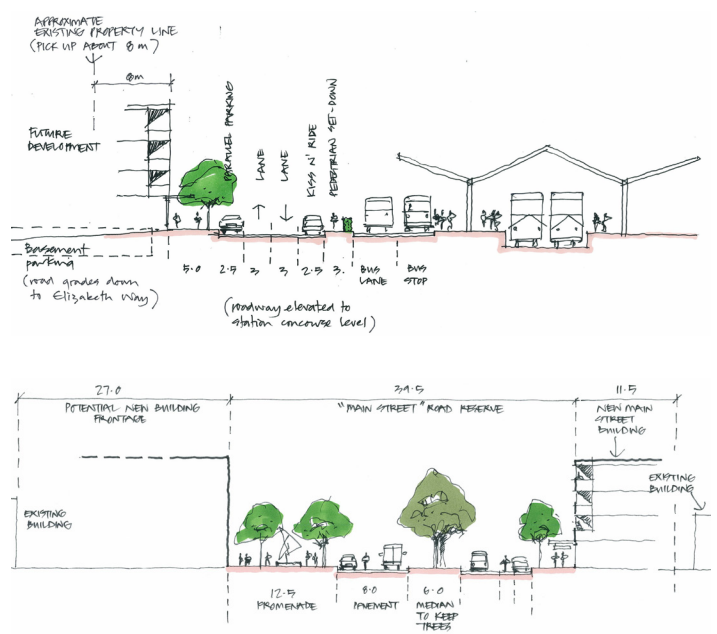
Elizabeth Railway Station Precinct Concept Plan



The Elizabeth train station will be redeveloped as part of the Electrification of Adelaide's Rail lines. As a result of this investment, the City of Playford sought to examine the opportunities around the station to accommodate additional growth for a TOD, as outlined in the 30 Year Plan for Greater Adelaide.

The Concept Plan needed to accommodate significant potential growth on the LMC land to the west, as well as strengthen pedestrian movement and connectivity to the existing Elizabeth Shopping Centre. Critical to the structure of the area is an at grade rail crossing which links the two future centres and a separate Peachey Road connector road to accommodate growth in traffic from future development to the north of the centre. Also important are improvements to the public realm at Mountbatten Square and along Elizabeth Way which links the station to the existing Centre.

The Concept Plan recommends short, medium and long term improvements to facilitate the vision of a main street approach to the centre at this location, together with a public plaza, boulevard and additional development opportunities as a result of rationalisation of large road reserves. The Concept Plan is being used to further guide the development of a Structure Plan for the LMC land.



Location: Elizabeth, South Australia

Client: City of Playford, LMC & DTEI

Date: June - September 2010

In association with:

- Aurecon
- Ian Robertson Design